

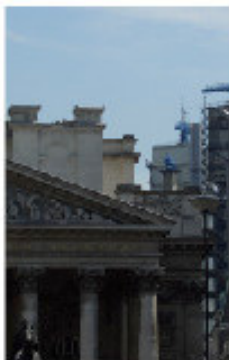
Our Training Offerings Include:

| | |
|-------------------------------|--------|
| Successful Project Management | 2 Days |
| Project Risk Management | 2 Days |
| Programme Management | 2 Days |
| User Acceptance Testing | 2 Days |



All of the above courses can be tailored to your requirements 'if necessary' and delivered at your premises or at our spacious and centrally located training rooms in the heart of the city.

Our cost effective rates will allow your organisation to meet its training objectives within budget.



For availability on any of the above courses or for further information about our additional services please visit our website www.squaremile-consulting.com

or contact us on:

Phone: 0207 247 9449

Email: training@squaremile-consulting.com



63 London Fruit & Wool Exchange
Brushfield Street
London.
E1 6EP



| <i>Programme Management Course Synopsis</i> | | | |
|---|-------------------------------|--------------|----------------------------|
| <i>Day 1</i> | | <i>Day 2</i> | |
| 1 | Programme Versus a Project | 10 | Resource Management |
| 2 | Project Basics | 11 | Inter – dependencies |
| 3 | Organisation and Structure | 12 | Monitoring & Control |
| 4 | Roles and Responsibilities | 13 | Change Control |
| 5 | Programme Initiation | 14 | Quality |
| 6 | Prioritisation | 15 | Status Reporting |
| 7 | The Planning Process | 16 | Communication |
| 8 | Risk Management | 17 | Closure of a programme |
| 9 | Evaluation and Prioritisation | 18 | Post Implementation Review |

| <i>Project Management Course Synopsis</i> | | | |
|---|----------------------------|--------------|---------------------------------|
| <i>Day 1</i> | | <i>Day 2</i> | |
| 1 | What is a project | 10 | Project Controls |
| 2 | Project Drivers | 11 | Risk Management |
| 3 | Project Evaluation | 12 | Developing a Plan |
| 4 | Project Initiation | 13 | Understanding Dependencies |
| 5 | Organisation and Structure | 14 | Project Monitoring |
| 6 | Team / Skill Management | 15 | Supplier Management |
| 7 | The Planning Process | 16 | Managing Change in a Project |
| 8 | Estimating and Contingency | 17 | Controlled Closure of a Project |
| 9 | Communication | 18 | Post Implementation Review |

| <i>Risk Management Course Synopsis</i> | | | |
|--|--------------------------------|--------------|--------------------------------|
| <i>Day 1</i> | | <i>Day 2</i> | |
| 1 | Introduction | 10 | Assessment and Impact |
| 2 | Project Principles | 11 | Sensitivity Analysis |
| 3 | The Reality of Projects | 12 | Risk Mitigation – The Response |
| 4 | Risks Overview | 13 | Logging and Audit |
| 5 | Project Risks | 14 | Monitoring and Control |
| 6 | Risk Policy – What to Consider | 15 | Continual Learning |
| 7 | Responsibility and | 16 | The Lifecycle to Closure |
| 8 | Risk Identification | 17 | Checklists |
| 9 | Sources of Information | 18 | Conclusions |

| <i>IT Testing Course Synopsis</i> | | | |
|-----------------------------------|--------------------------|--------------|------------------------------|
| <i>Day 1</i> | | <i>Day 2</i> | |
| 1 | Introduction | 10 | Communication |
| 2 | Why, When, Who Tests | 11 | Test Scenario Specification |
| 3 | Types of Testing | 12 | Identifying Test Conditions |
| 4 | Business Requirements | 13 | Text Script Specification |
| 5 | Functional Specification | 14 | When to Start / Stop Testing |
| 6 | What to Test | 15 | Text Execution |
| 7 | Configuration Management | 16 | Text Recording |
| 8 | Quality Reviews | 17 | Checking for Test Completion |
| 9 | Test Planning | 18 | Release Management |

All of the above courses are priced at £875.00 per delegate excluding VAT



What happens if I have to cancel ?

Confirm your cancellation in writing or call 2 weeks before the event and receive a refund less 10% VAT service charge. Should you cancel between this date and one date before the event You will receive no refund. A substitute delegate is welcome at no extra charge

Data Protection

We never make our mailing list available to other organisations. However we would like to keep you informed of future seminars. If you would prefer NOT to receive information from us please tick this box

Square Mile Consulting is an Independent firm of Management Consultants with extensive experience in Project Management , business change and the procurement of services and systems across a range of business sectors.

Visit our web site www.squaremile-consulting.com for details of our consultancy services.